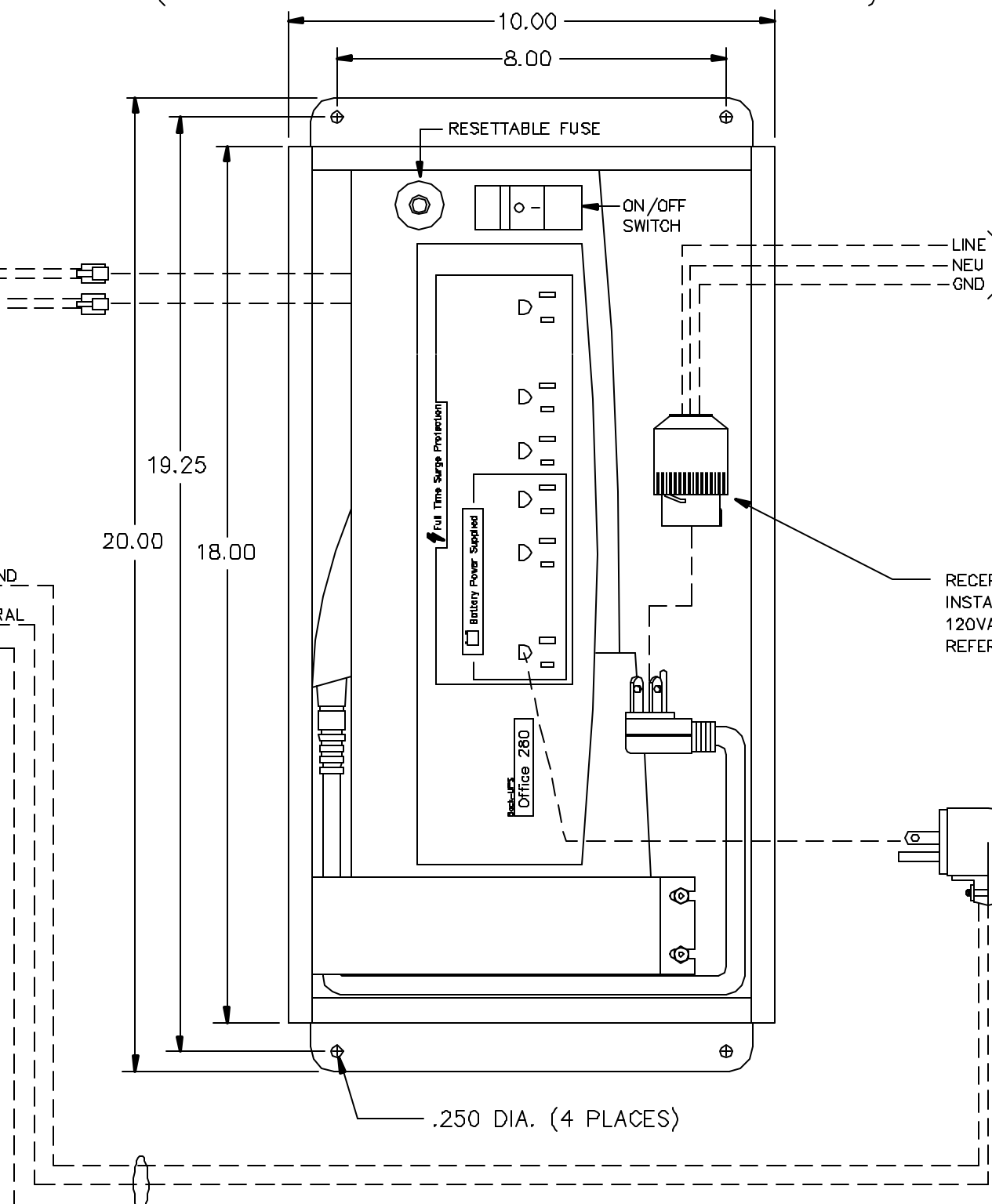
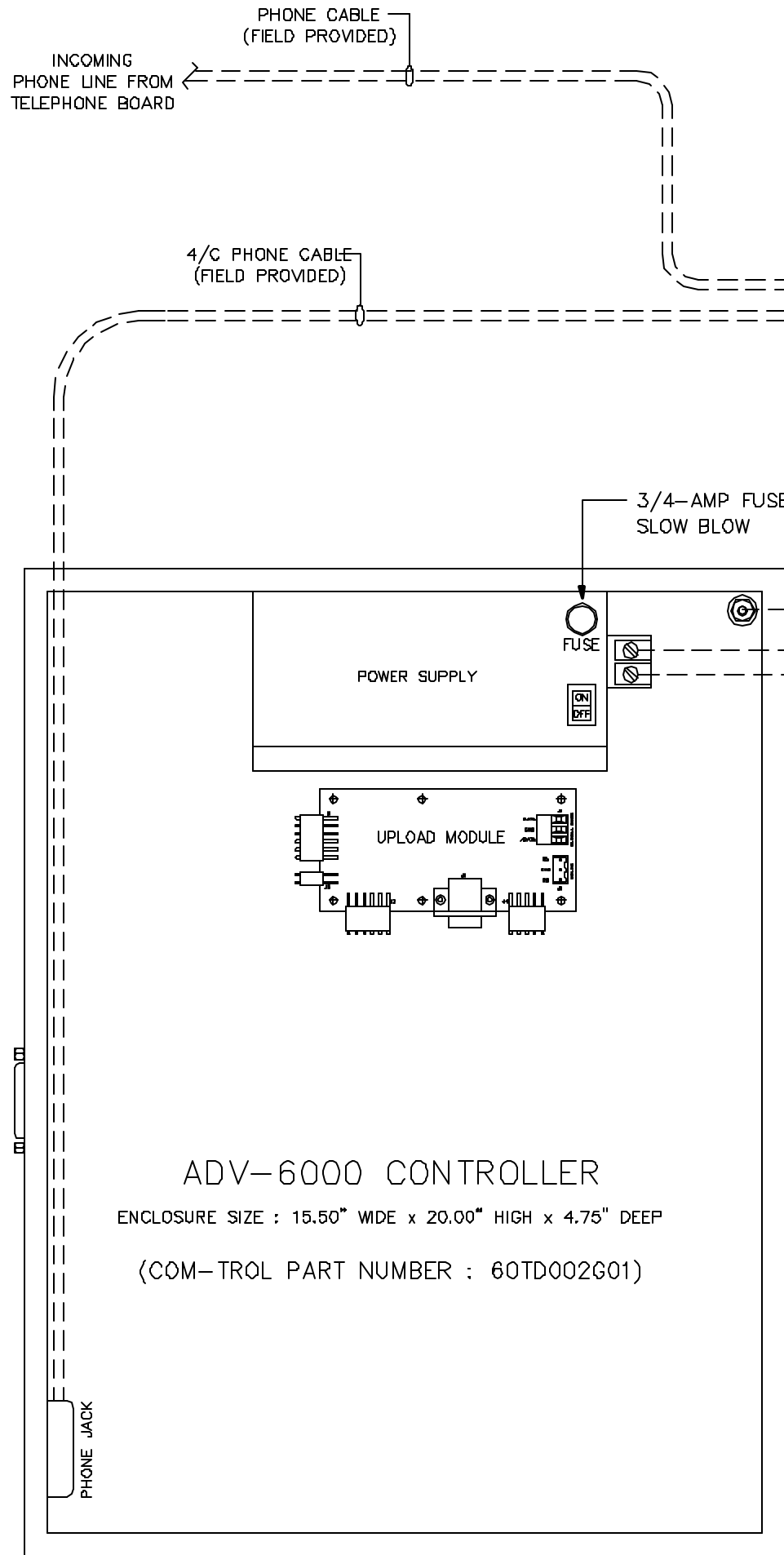


(COM-TROL PART NUMBER : 90TD016G02)



LINE }  
NEU } **120VAC POWER SOURCE**  
GND }

FROM EXTERNALLY PROTECTED DISCONNECT.  
MAXIMUM RATING: 120VAC 50/60HZ 2.5 AMPS  
USE #12 COPPER CLAD CONDUCTORS WITH A  
MIN. OF 75°C RATED INSULATION.

RECEPTACLE CONNECTOR PROVIDED WITH UNIT.  
INSTALLER OF UNIT TO TERMINATE WIRE FROM  
120VAC POWER SOURCE TO RECEPTACLE CONNECTOR.  
REFER TO INSTRUCTIONS PROVIDED WITH UNIT

PLUG CONNECTOR PROVIDED WITH UNIT.  
INSTALLER OF UNIT TO TERMINATE WIRE FROM  
ADV-6000 CONTROL TO PLUG CONNECTOR.  
REFER TO INSTRUCTIONS PROVIDED WITH UNIT.

WIRE PROVIDED AND TERMINATED BY INSTALLER OF UNIT.  
USE #12 COPPER CLAD CONDUCTORS WITH A MINIMUM  
OF 75°C RATED INSULATION.

CONFIDENTIAL, PROPRIETARY			
MATERIAL AND INFORMATION THAT IS THE SOLE PROPERTY OF INVENSYS. UNAUTHORIZED USE OR DISCLOSURE OF THE CONTENTS IS STRICTLY FORBIDDEN. COPYRIGHT © 2001 Com-Trol, an Invensys Company, All Rights Reserved			
<b>COM-TROL</b> An Invensys Company			
TITLE		ADV-6000 6000 W/UPS & SURGE PROTECTOR	
DWG. NO. 945003BH08	REV. C	DATE 08-27-01	SHEET 3-08