



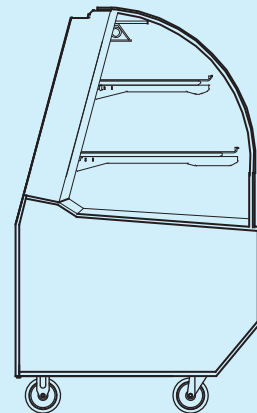
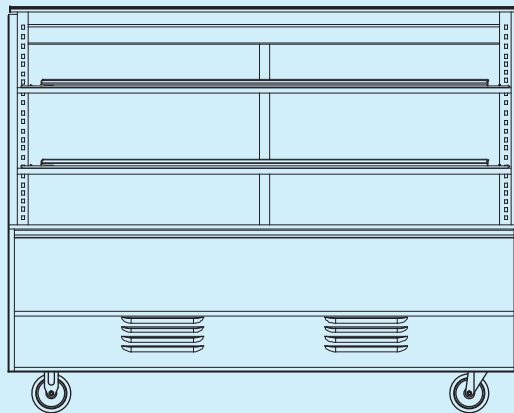
*Turbo Air Speed up the Pace of Innovation*

**CAUTION!**  
PLEASE KEEP POWER  
SWITCH ON BEFORE  
OPERATING THIS EQUIPMENT

# Display Cases Deli Cases Service Manual

Please read this manual completely before attempting to install or operate this equipment!

TD-4R  
TD-5R



# TABLE OF CONTENTS

## 1. FEATURE CHART

- 1-1. FRONT VIEW
- 1-2. SIDE VIEW
- 1-3. REAR VIEW

## 2. WIRING DIAGRAM

- 2-1. REFRIGERATOR

## 3. PART DETAILS

- 3-1. SIDE GLASS PART
- 3-2. FRONT GLASS PART
- 3-3. WIRE SHELF LATHE PART
- 3-4. LAMP ASSY
- 3-5. FRONT MOTOR PART
- 3-6. FRONT GASKET PART
- 3-7. REFRIGERATION COMPARTMENT
- 3-8. COOLING COMPARTMENT
- 3-9. CONTROL BACK
- 3-10. WIRE DIAGRAM AREA
- 3-11. BACK DOOR

## 4. MAIN COMPONENTS

- 4-1. COMPRESSOR
- 4-2. LIQUID LINE FILTER
- 4-3. EVAP & COND FAN MOTOR
- 4-4. CONDENSER FAN BLADE
- 4-5. EVAP FAN BLADE
- 4-6. POWER SWITCH
- 4-7. CONDENSER REMOVE
- 4-8. BALLAST F LAMP
- 4-9. FLUORESCENT LAMP
- 4-10. LAMP SOCKET
- 4-11. MAIN PCB
- 4-12. DISPLAY PCB
- 4-13. TRANS FORMER

## 5. ELECTRONIC CONTROL INSTRUCTIONS

- 5-1. REFRIGERATOR CONTROL
  - 5-1-1. HOW TO USE THE DISPLAY PCB PANEL
  - 5-1-2. ERROR CODE
  - 5-1-3. FUNCTION TABLE

## **6. TROUBLE SHOOTING CHART**

- 6-1. THE REFRIGERATOR DOES NOT COOLING
- 6-2. THE REFRIGERATOR DOES NOT COOLING WELL
- 6-3. LAMP DOES NOT LIGHT WELL
- 6-4. WHEN THERE IS A EXCESSIVE NOISE

## **7. REFRIGERANT CYCLE DIAGRAM**

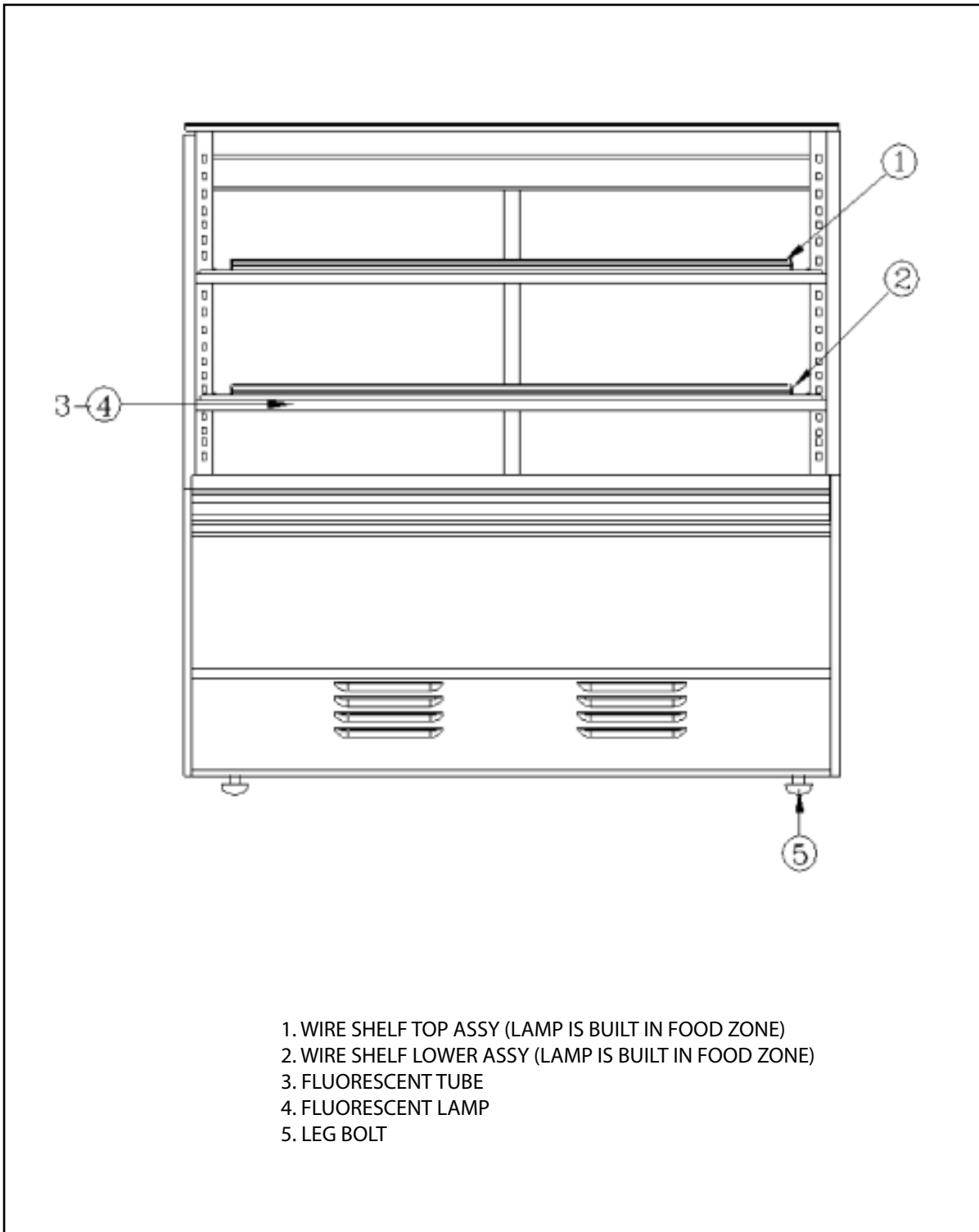
## **8. REPLACEMENT OF MAIN COMPONENTS**

- 8-1. END GLASS PART
- 8-2. FRONT GLASS PART
- 8-3. LATHE TOP COVER PART
- 8-4. WIRE SHELF LATHE PART
- 8-5. FRONT MOTOR PART
- 8-6. FRONT GLASS PART
- 8-7. REFRIGERATION COMPARTMENT
- 8-8. COOL COMPARTMENT
- 8-9. CONTROL BACK PART
- 8-10. MAIN WIRING PART

## **9. PART LIST**

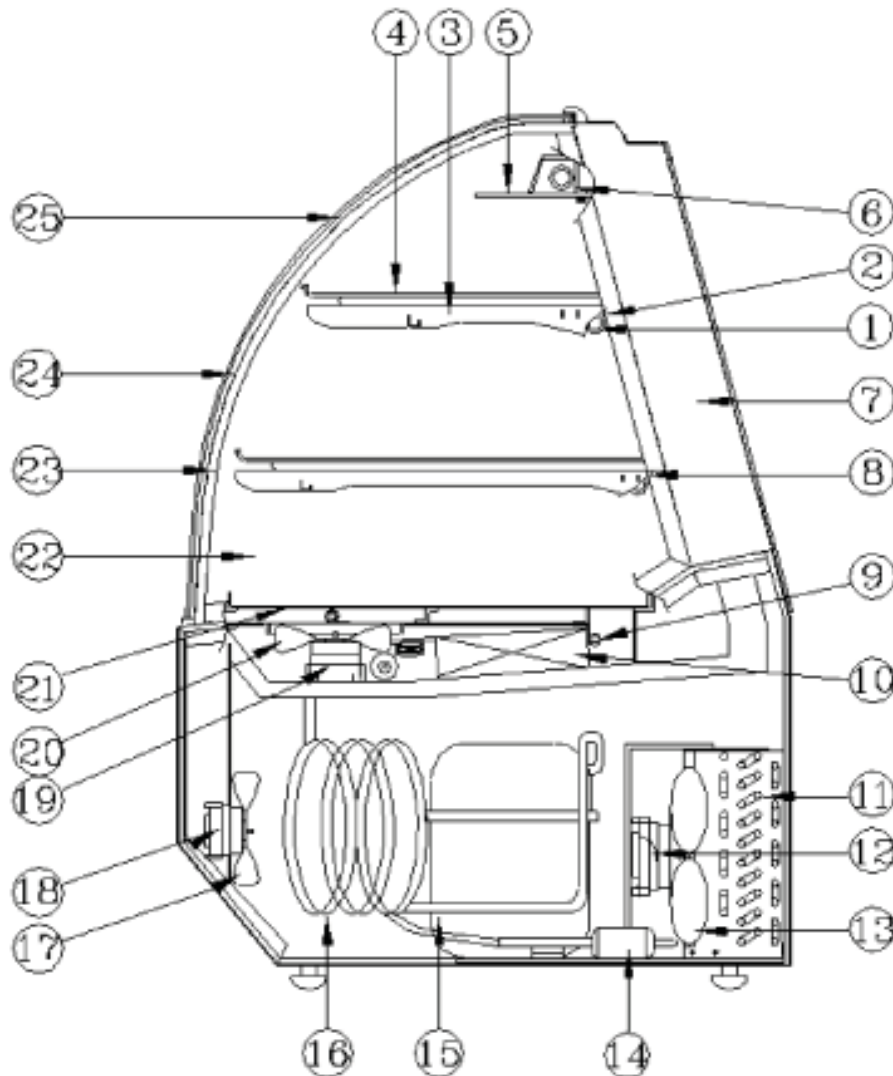
# 1. FEATURE CHART

## 1-1. FRONT VIEW



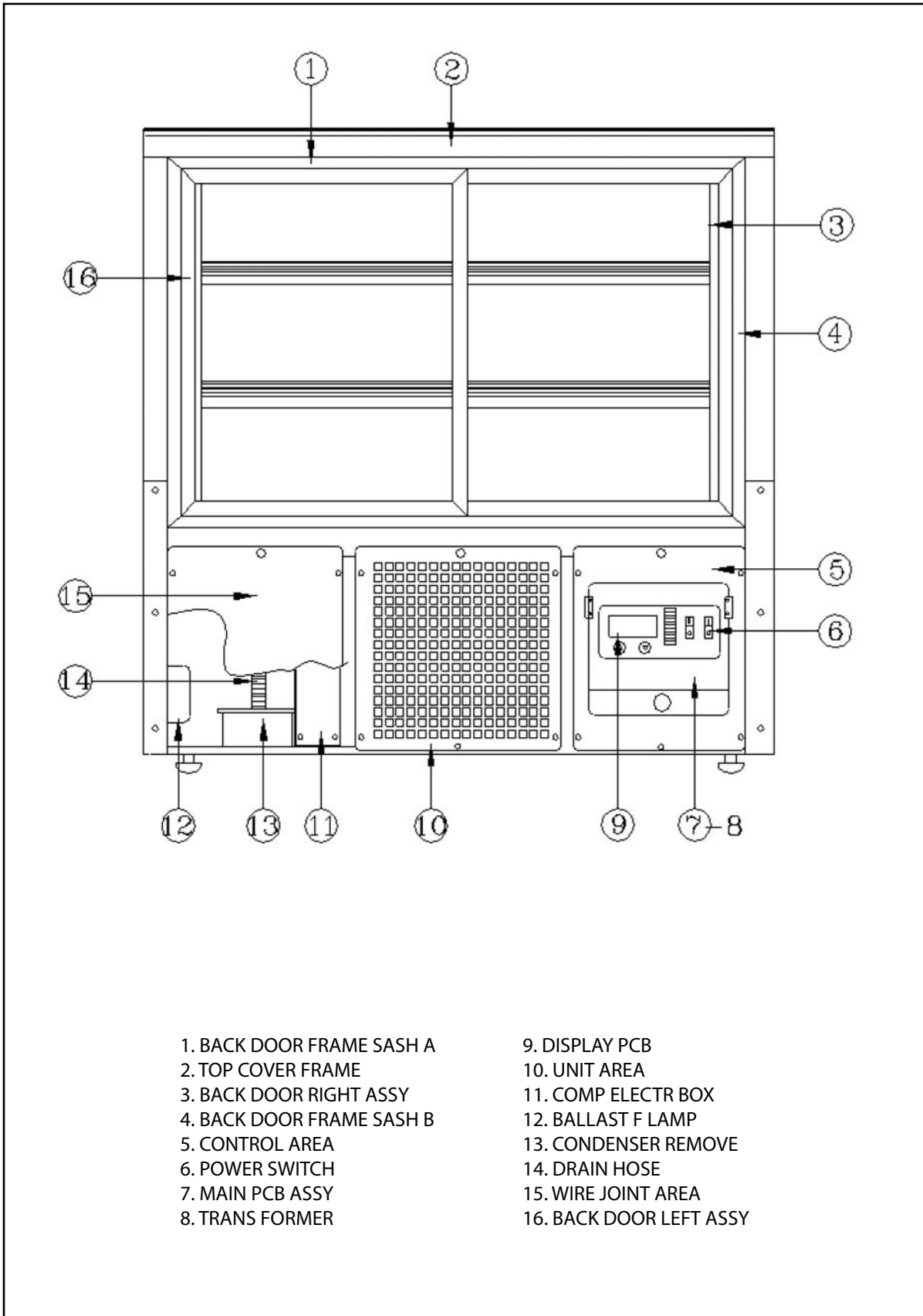
- 1. WIRE SHELF TOP ASSY (LAMP IS BUILT IN FOOD ZONE)
- 2. WIRE SHELF LOWER ASSY (LAMP IS BUILT IN FOOD ZONE)
- 3. FLUORESCENT TUBE
- 4. FLUORESCENT LAMP
- 5. LEG BOLT

## 1-2. SIDE VIEW



- |                              |                         |                       |
|------------------------------|-------------------------|-----------------------|
| 1. LAMP SOCKET               | 10. EVAP COIL ASSY      | 18. FRONT FAN MOTOR   |
| 2. LAMP SOCKET COVER         | 11. CONDENSER ASSY      | 19. EVAP FAN MOTOR    |
| 3. WIRE SHELF LAT SHOT ASSY  | 12. COND PAN MOTOR ASSY | 20. EVAP FAN BLADE    |
| 4. PLATE SHELF ASSY          | 13. COND PAN BLADE      | 21. DISPLAY PAN       |
| 5. ARCYLE COVER C            | 14. LIQUID LINE FILTER  | 22. END GLASS         |
| 6. LATHE TOP COVER ASSY      | 15. COMPRESSOR          | 23. SIDE GLASS GASKET |
| 7. COVER FRAME L (R)         | 16. SUCTION LINE        | 24. SIDE GLASS SASH   |
| 8. WIRE SHELF LAT LARGE ASSY | 17. FRONT FAN BLADE     | 25. FRONT GLASS       |
| 9. THERMISTER ASSY           |                         |                       |

### 1-3. REAR VIEW

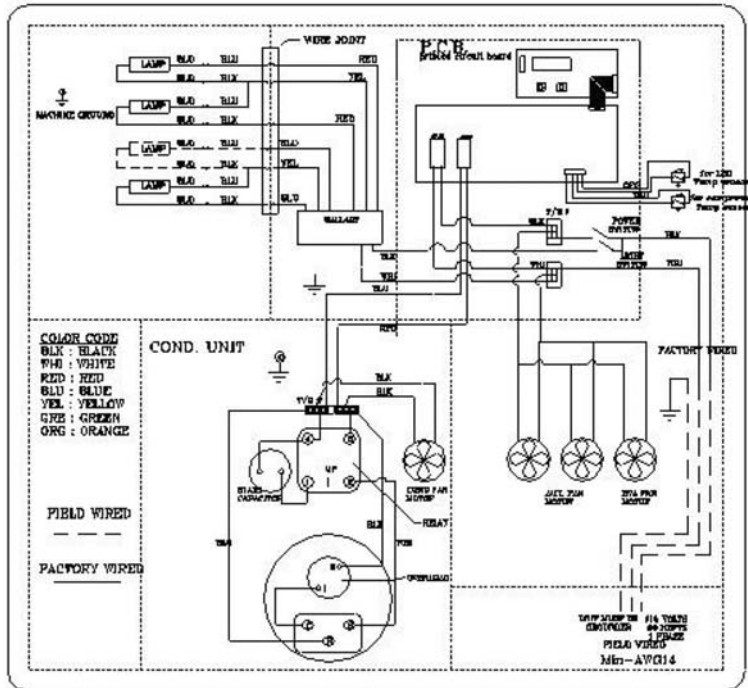


- 1. BACK DOOR FRAME SASH A
- 2. TOP COVER FRAME
- 3. BACK DOOR RIGHT ASSY
- 4. BACK DOOR FRAME SASH B
- 5. CONTROL AREA
- 6. POWER SWITCH
- 7. MAIN PCB ASSY
- 8. TRANS FORMER

- 9. DISPLAY PCB
- 10. UNIT AREA
- 11. COMP ELECTR BOX
- 12. BALLAST F LAMP
- 13. CONDENSER REMOVE
- 14. DRAIN HOSE
- 15. WIRE JOINT AREA
- 16. BACK DOOR LEFT ASSY

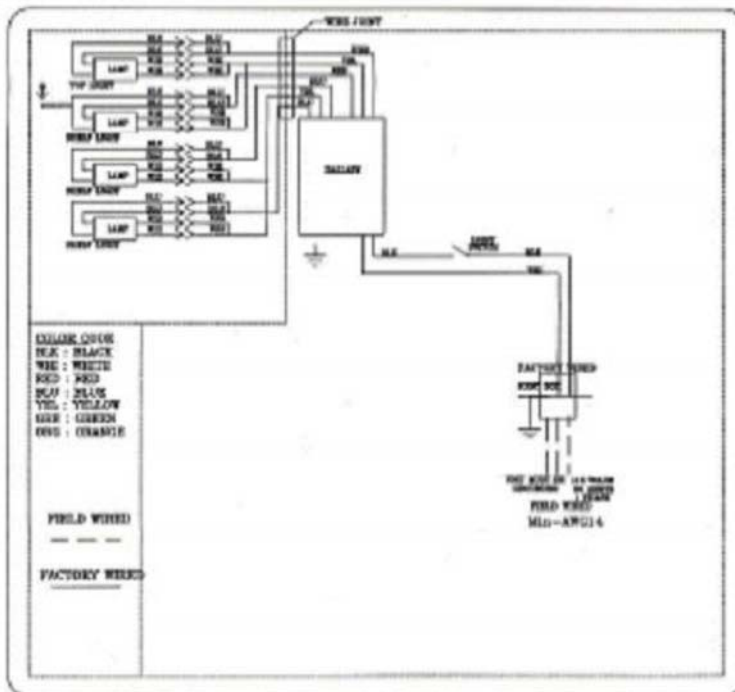
# 2. WIRING DIAGRAM

## 2-1. REFRIGERATOR



COPPER ALUMINUM CONDUCTOR ONLY

## 2-2. DRY CASE



COPPER ALUMINUM CONDUCTOR ONLY

### 3. PART DETAILS

#### 3-1. SIDE GLASS PART



WIRE SHELF LATHE  
MID ASSY

END GLASS  
GASKET

SIDE PANEL

END GLASS

END GLASS SASH

#### 3-2. FRONT GLASS PART



TOP GLASS  
CLAMP A(B)

FRONT PANEL



### 3-3. WIRE SHELF LATHE PART



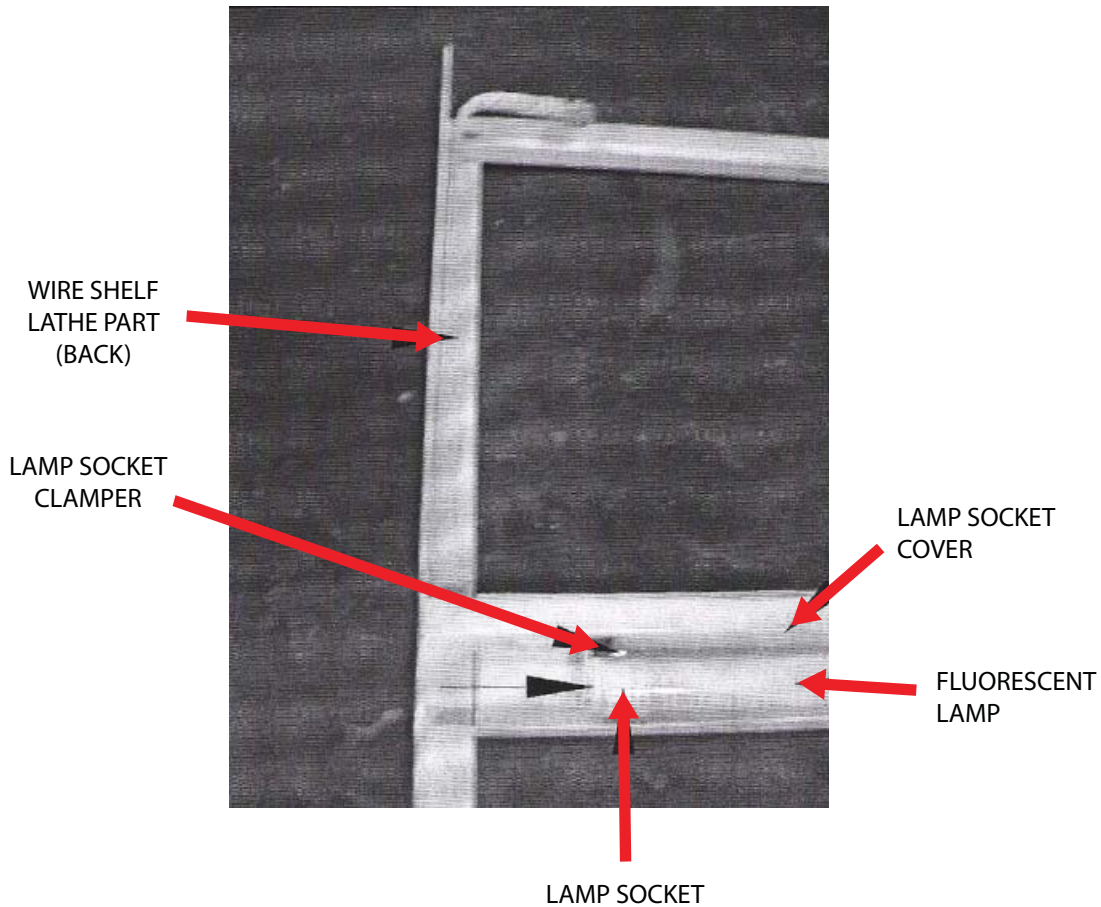
LATHE TOP  
COVER ASSY

WIRE SHELF LATHE  
SHOT ASSY

WIRE SHELF LATHE  
MID ASSY

WIRE SHELF LATHE  
LARGE ASSY

### 3-4. LAMP ASSY



WIRE SHELF  
LATHE PART  
(BACK)

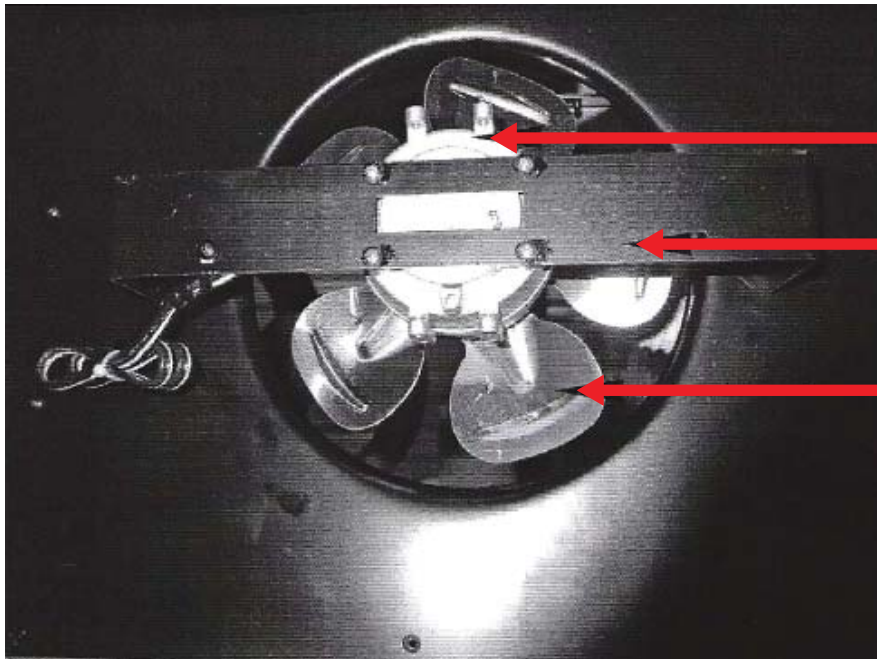
LAMP SOCKET  
CLAMPER

LAMP SOCKET  
COVER

FLUORESCENT  
LAMP

LAMP SOCKET

### 3-5. FRONT MOTOR PART

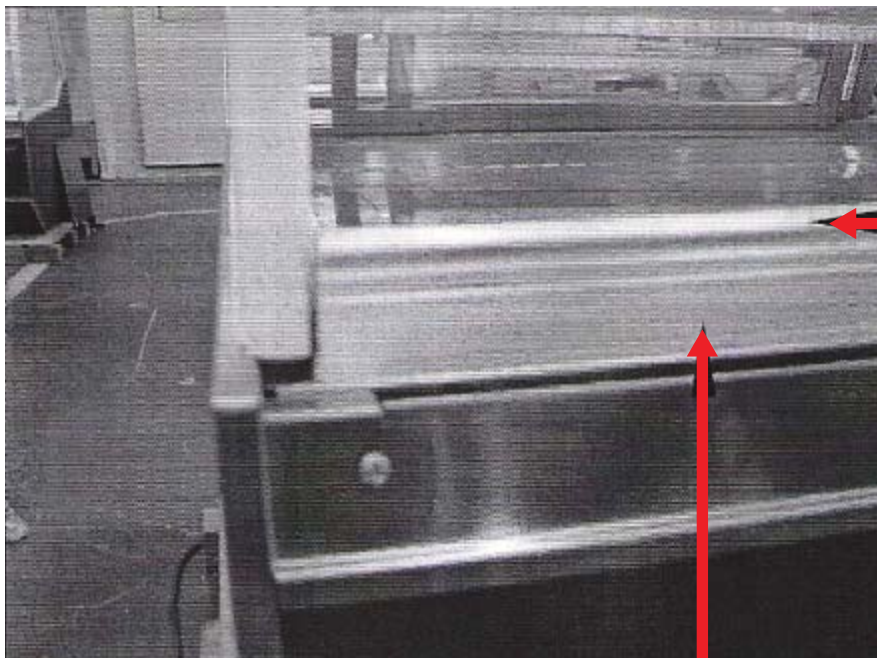


FAN MOTOR (9W)

MOTOR BRACKET

FAN BLADE (Ø200)

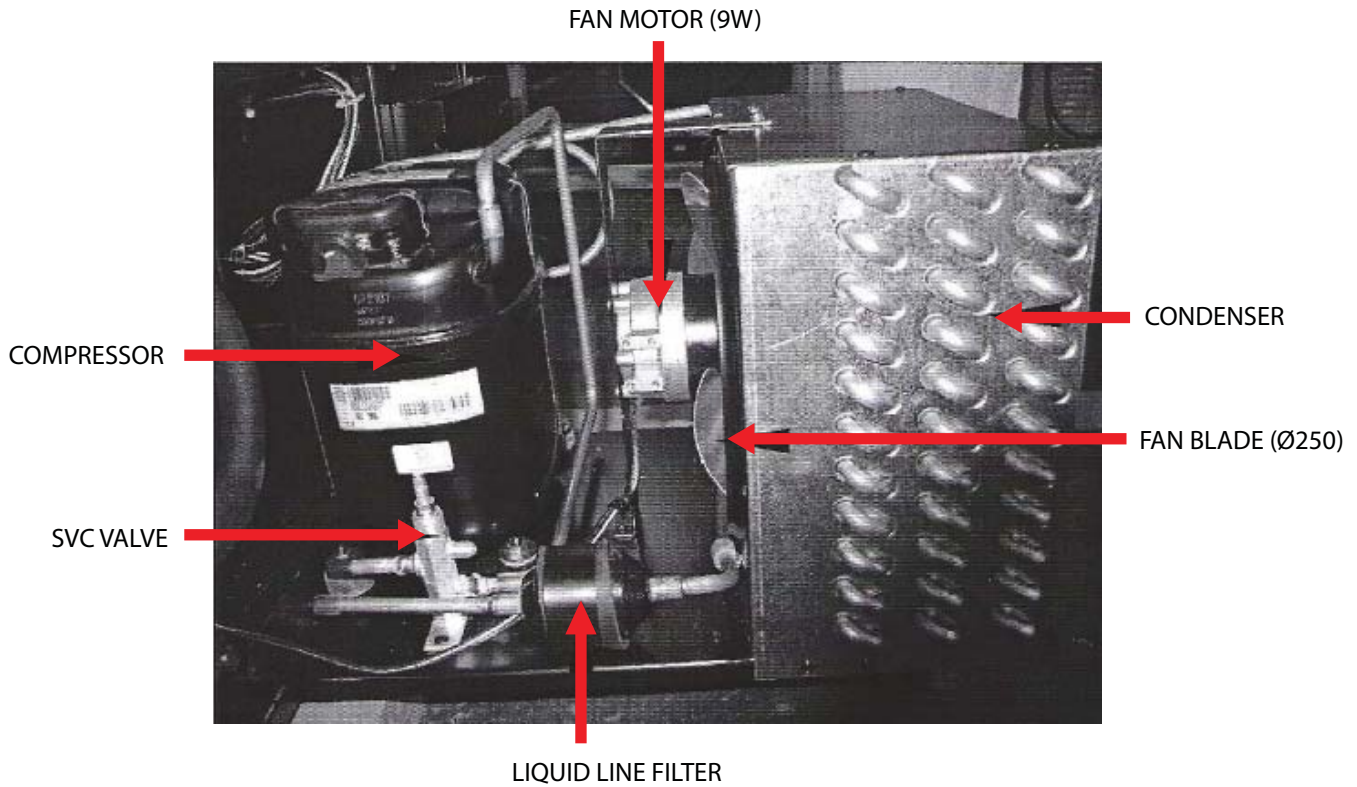
### 3-6. FRONT GASKET PART



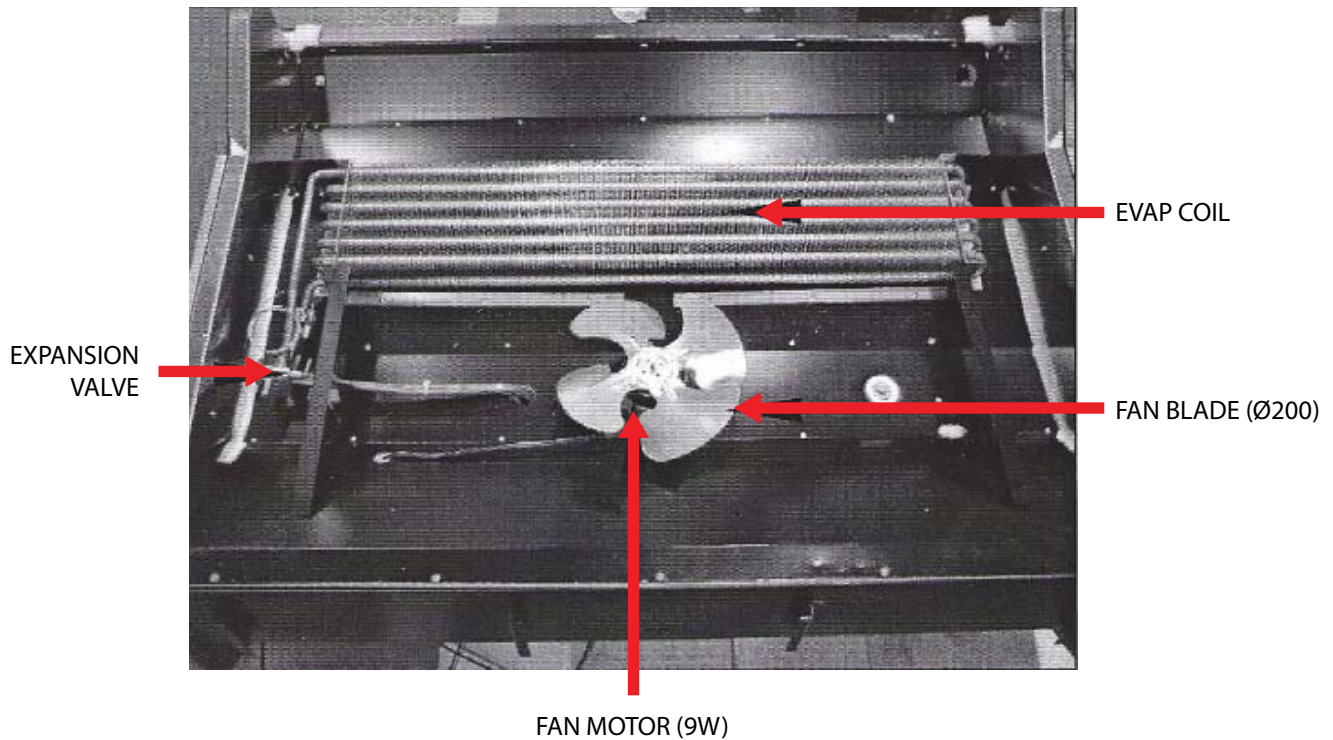
FRONT GASKET

FRONT GASKET SASH

### 3-7. REFRIGERATION COMPARTMENT CONDENSING UNIT



### 3-8. COOLING COMPARTMENT

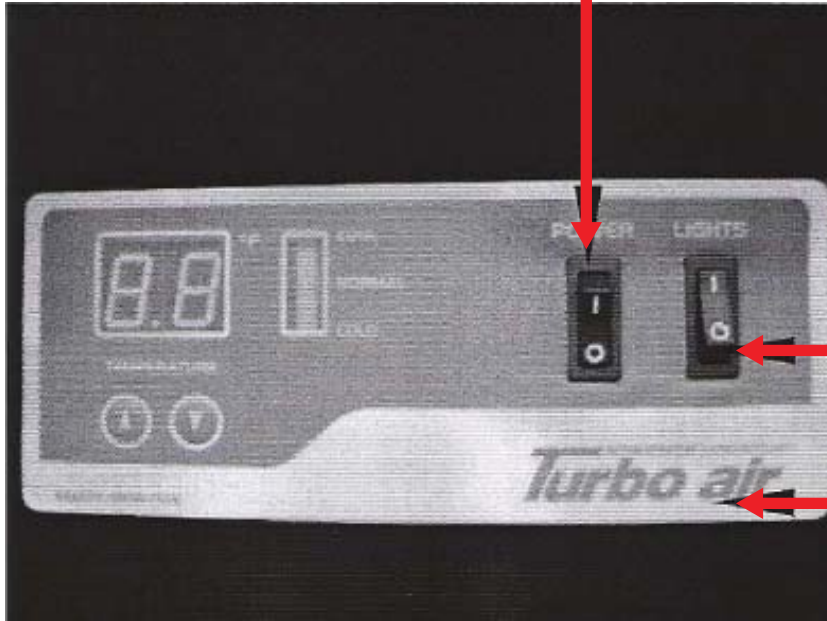




### 3-9. CONTROL BACK

DISPLAY

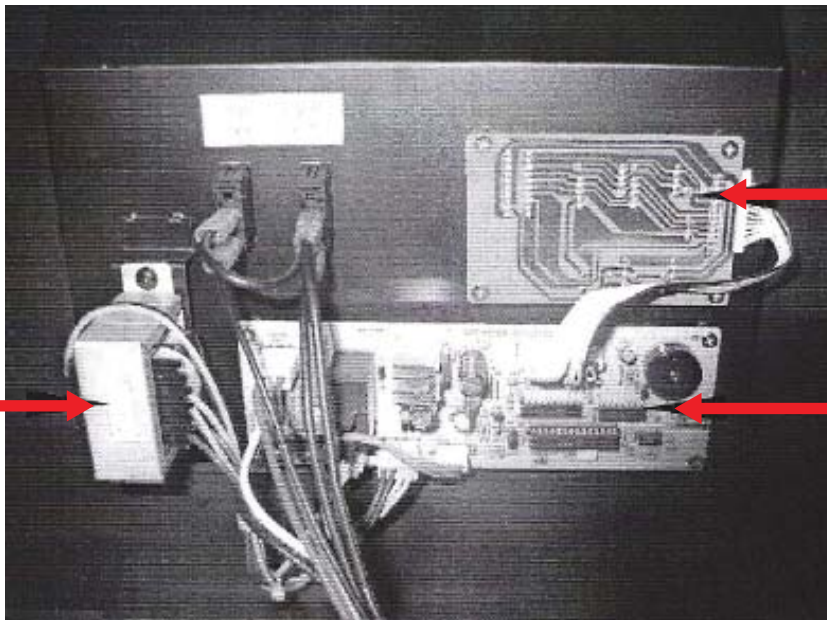
POWER SWITCH



LIGHTS SWITCH

INLAY PCB

### DISPLAY PCB & MAIN PCB

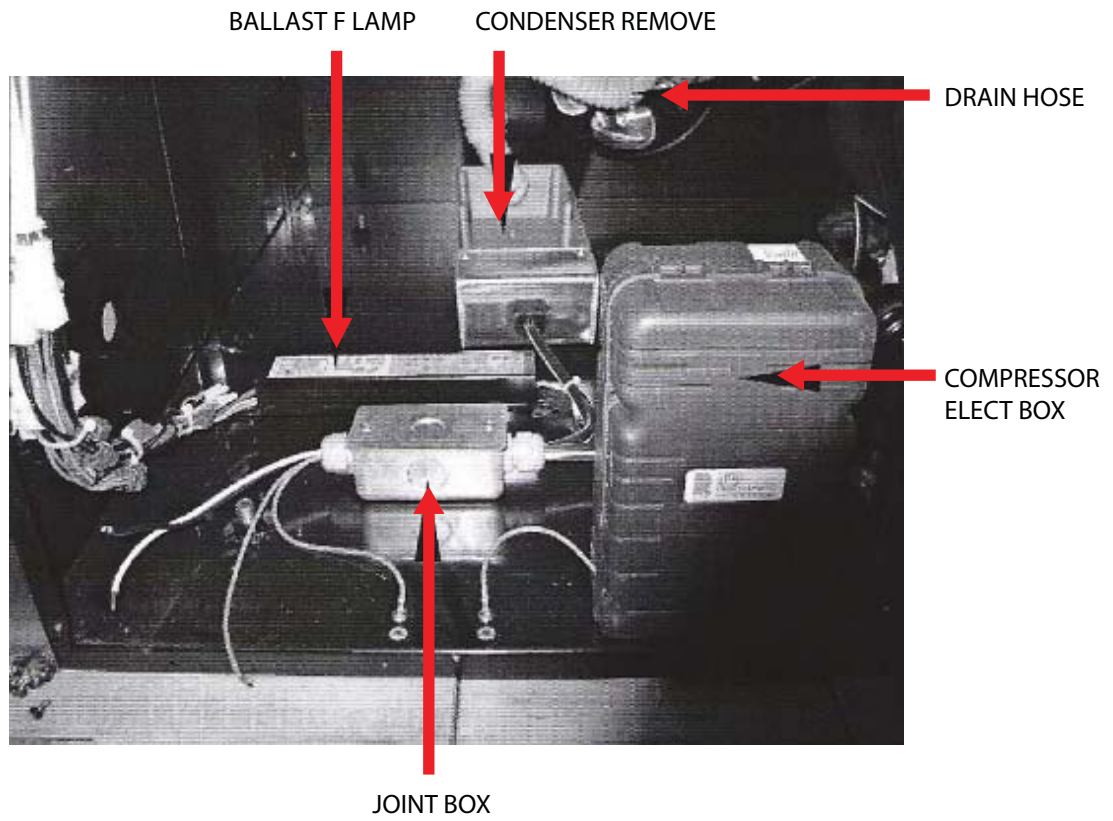


DISPLAY PCB

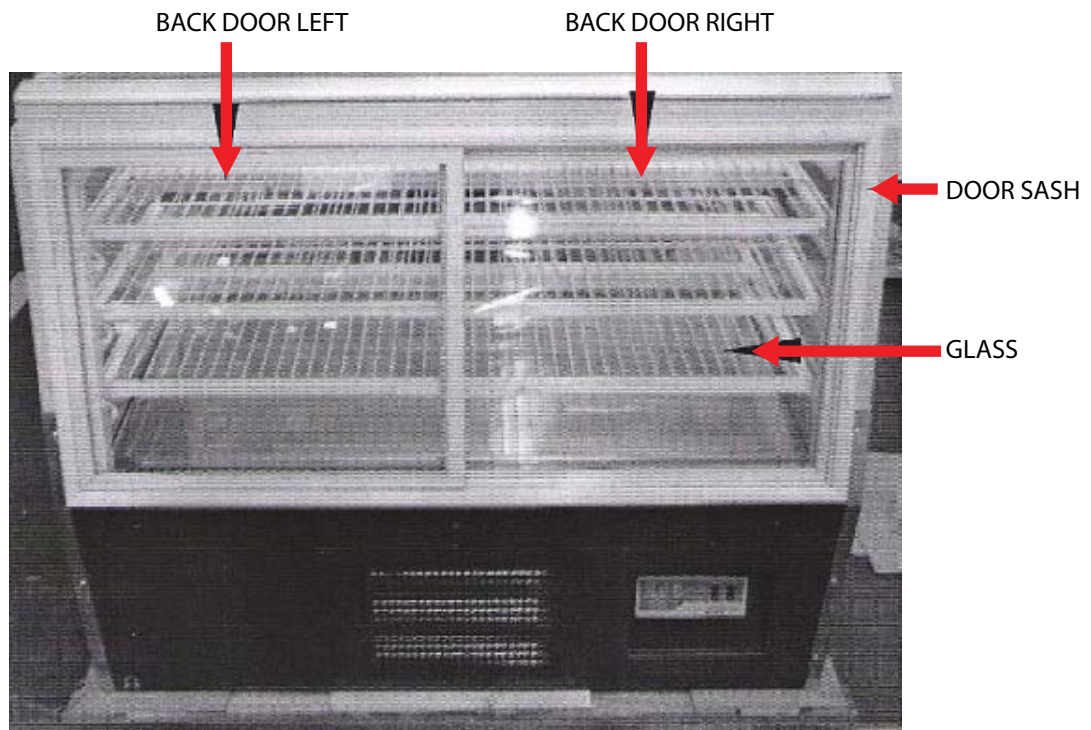
MAIN PCB

TRANSFORMER

### 3-10 WIRING AREA



### 3-11. BACK DOOR



## 4. MAIN COMPONENTS

### 4-1. COMPRESSOR

MODEL	TD-4R	TD-5R
REFRIGERANT	R-134A	
VOLTAGE	115V / 60HZ	
COMP MODEL	CAJ4476Y (AKA4476YXA)	
PART CODE	BS1C001	
STARTING TYPE	CSIR	

### 4-2. LIQUID LINE FILTER

MODEL	TD-4R	TD-5R
REFRIGERANT	R-134A	
PRESSURE	MIN 610 PSIG	
MODEL	SMGT-7	
PART CODE	BS1O300	

### 4-3. CAPILLARY TUBE

MODEL	TD-4R	TD-5R
REFRIGERANT	R-134A	
OD,S	OD3.4XID2.2X3300MM	
MODEL		
PART CODE	BS1W115B(D)	

### 4-4. EVAP & CON'D FAN MOTOR

MODEL	TD-4R	TD-5R
REFRIGERANT	R-134A	
MODEL	SC-045	
PART CODE	BS1C136	
TYPE	CCW	

#### 4-5. CONDENSER FAN BLADE

MODEL	TD-4R	TD-5R
METAL	AL	
SPEC	Ø250 4B	
PART CODE	BS1Z149	
TYPE	CCW	

#### 4-6. EVAP FAN BLADE

MODEL	TD-4R	TD-5R
METAL	AL	
SPEC	Ø200 5B	
PART CODE	BS1Z148	
TYPE	CCW	

#### 4-7. POWER SWITCH

MODEL	TD-4R	TD-5R
MARKED	"I" AND "O"	
RATING	125V, 20FLA, 3/4HP	
PART CODE	BS10300	

**4-8. BALLAST F LAMP**

MODEL	TD-4R	TD-5R
RATING	120V, 114W	
MODEL	LA432I120EN	
PART CODE	BS1C149	

**4-9. FLUORESCENT LAMP**

MODEL	TD-4R	TD-5R
RATING	30W	32W
MODEL	TL-D30W	FLR32SS
PART CODE	BS10303	BS10305

**4-10. LAMP SOCKET**

MODEL	TD-4R	TD-5R
RATING	250VAC, 2A	
PART CODE	JS-214, JS-215	

**4-11. MAIN PCB**

MODEL	TD-4R	TD-5R
RATING	115V, 60HZ	
PART CODE	BS1X154A	

**4-12. DISPLAY PCB**

MODEL	TD-4R	TD-5R
RATING	115V, 60HZ	
PART CODE	BS1X174A	



**4-13. TRANS FORMER**

MODEL	TD-4R	TD-5R
RATING	AC120V, DC12V	
MODEL	EP-0301D	
PART CODE	BS1R100	

**4-14. GAS SPRING**

MODEL	TD-4R	TD-5R
SPEC	550N	770N
PART CODE	BS10308	BS10310

**4-15. SERVICE VALVE**

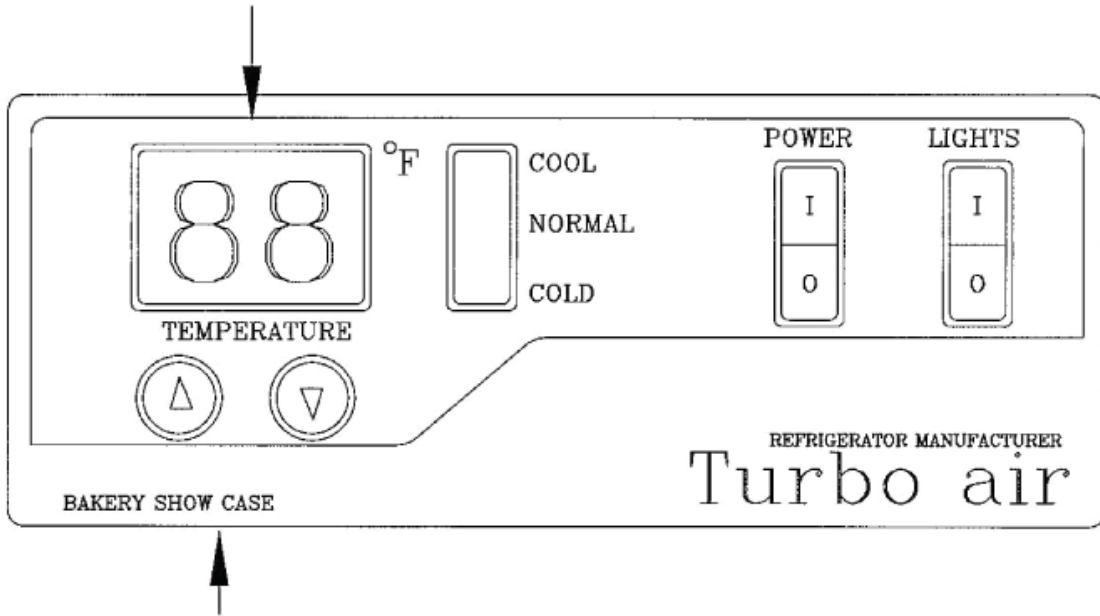
MODEL	TD-4R	TD-5R
SPEC	3/8"	
PART CODE	BS1C001	

# 5. ELEC'T CONTROL INSTRUCTIONS

## 5-1. REFRIGERATOR CONTROL

### 5-1-1. HOW TO USE THE DISPLAY PCB PANEL

- LED
- It indicates setting temperature.

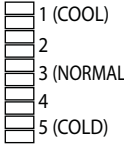
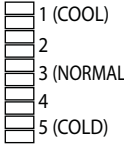
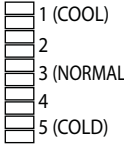


- Temperature can be controlled by the user
- Factory setting is level "normal" setting can be changed by pressing up/down button.

### 5-1-2. ERROR CODE

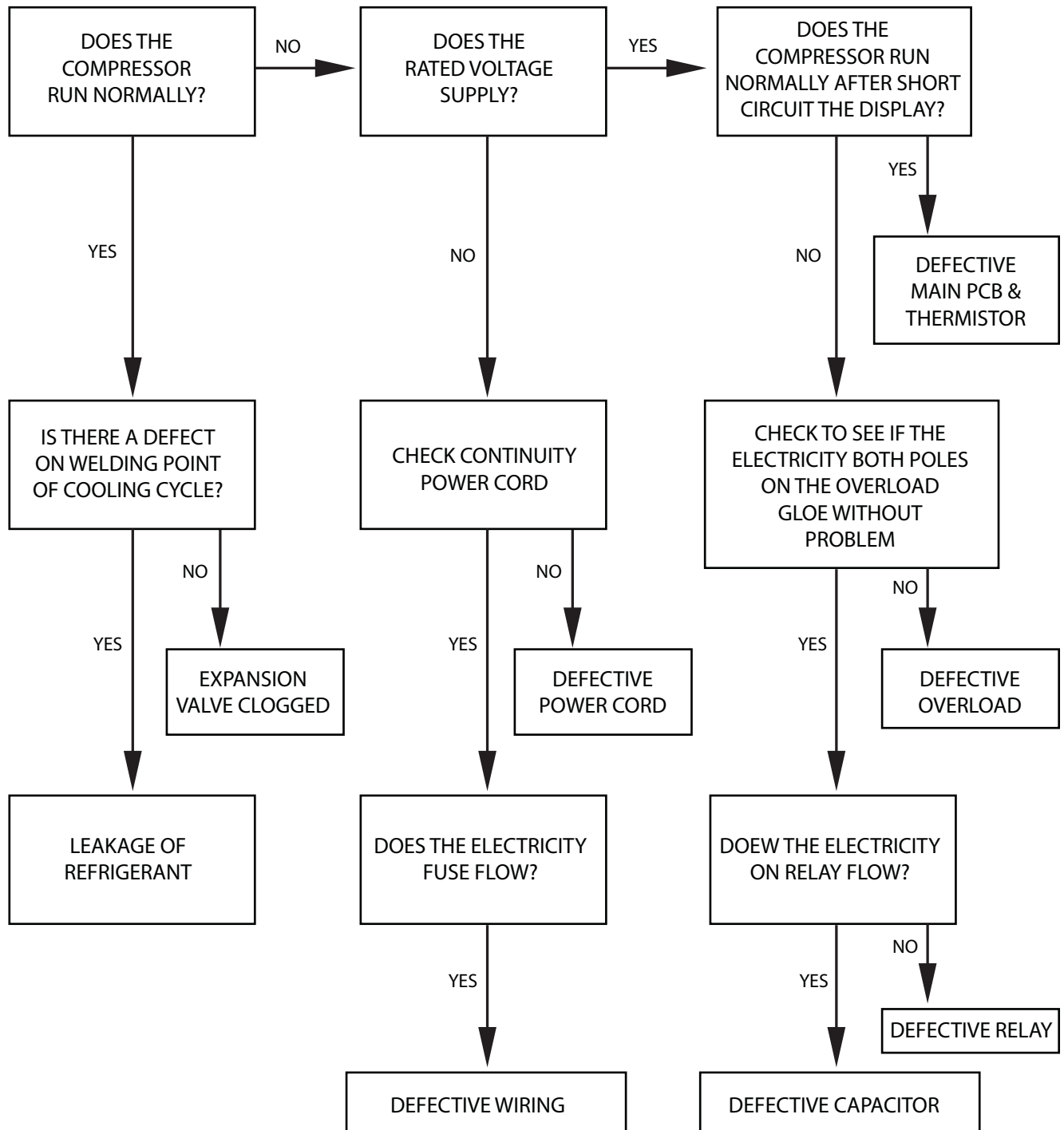
CODE	CONTENT	PERCEPTION METHOD	REFRIGERATION STATE
TE	T-SENSOR	OPEN	- NORMAL OPERATION - TIME CONTROL COMP ON : 10 MINUTES COMP OFF : 10 MINUTES
		SHORT	
CE	C-SENSOR	OPEN	- KEEP A NORMAL OPERATION
		SHORT	
CE	T-SENSOR C-SENSOR	OPEN	- NORMAL OPERATION - TIME CONTROL COMP ON : 10 MINUTES COMP OFF : 10 MINUTES
		SHORT	

5-1-3. FUNCTION TABLE

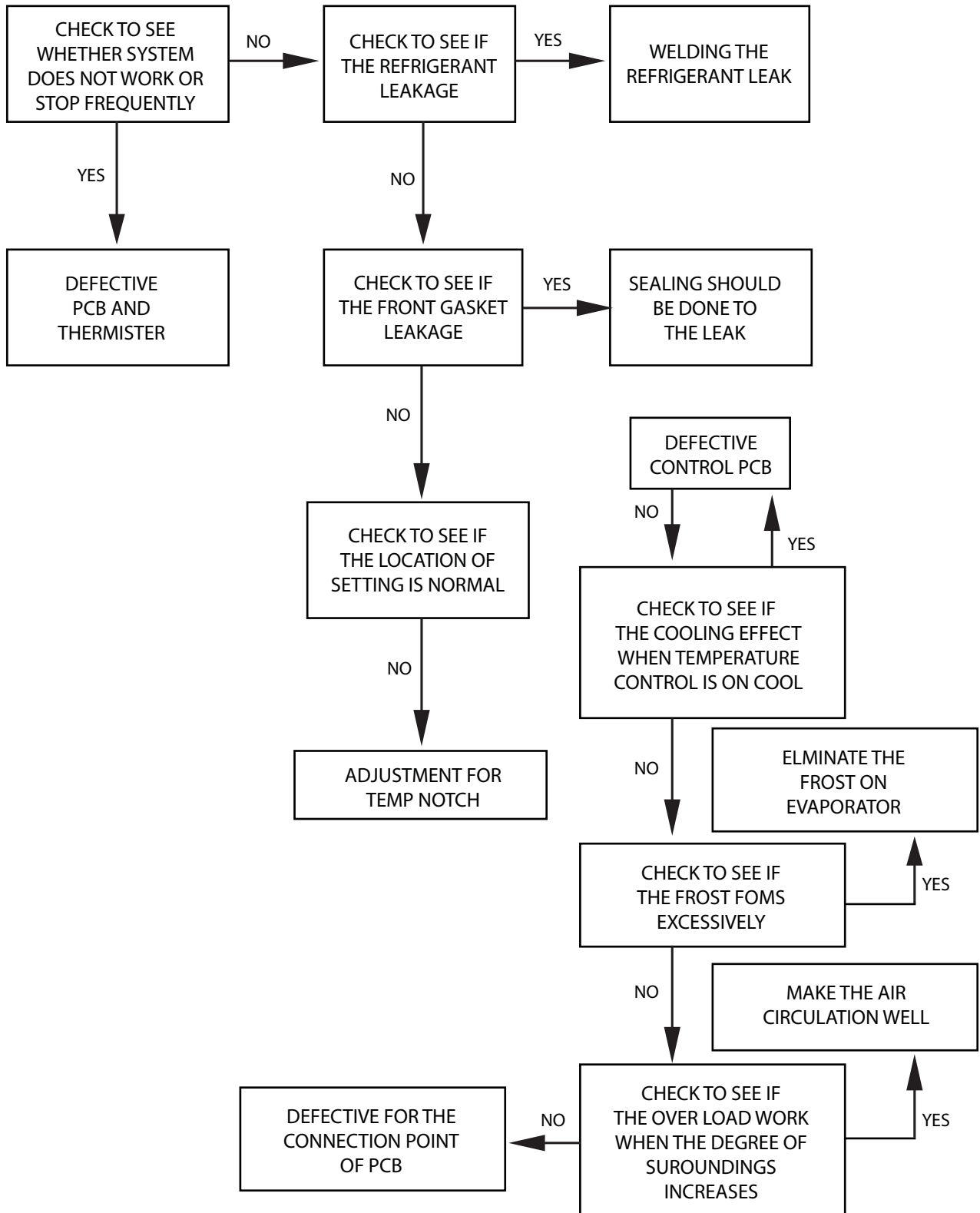
NO	FUNCTION	CONTROLLED PART	DESCRIPTION																										
1	OPERATION		1. Led displays inside temperaturer 2. Begins to run immediately if higher than 41°F and begin to run after 5 minutes pause if lower than 41°F																										
2	TEMPERATURE CONTROL	COMPRESSOR LED	1. The Temperature can be changes by pushing up/down buttons. 2. LED displays inside temperature. 3. Buzzer buzzes 1 time whenever a button is pressed. 4. Compressor automatically turns on and off by C-sensor (except error mode) 5. Comp on/off temperature (°F) <table border="1" data-bbox="748 911 1344 1230"> <thead> <tr> <th data-bbox="748 911 867 963">NOTCH</th> <th data-bbox="867 911 980 963">COMP ON</th> <th data-bbox="980 911 1089 963">COMP OFF</th> <th data-bbox="1089 911 1195 963">SETTING</th> <th data-bbox="1195 911 1344 963">BAR DISPLAY</th> </tr> </thead> <tbody> <tr> <td data-bbox="748 963 867 1016">1 (COOL)</td> <td data-bbox="867 963 980 1016">55°F</td> <td data-bbox="980 963 1089 1016">32°F</td> <td data-bbox="1089 963 1195 1016"></td> <td data-bbox="1195 963 1344 1016" rowspan="5">  </td> </tr> <tr> <td data-bbox="748 1016 867 1068">2</td> <td data-bbox="867 1016 980 1068">48°F</td> <td data-bbox="980 1016 1089 1068">28°F</td> <td data-bbox="1089 1016 1195 1068"></td> </tr> <tr> <td data-bbox="748 1068 867 1121">3 (NORMAL)</td> <td data-bbox="867 1068 980 1121">46°F</td> <td data-bbox="980 1068 1089 1121">25°F</td> <td data-bbox="1089 1068 1195 1121"></td> </tr> <tr> <td data-bbox="748 1121 867 1173">4</td> <td data-bbox="867 1121 980 1173">43°F</td> <td data-bbox="980 1121 1089 1173">23°F</td> <td data-bbox="1089 1121 1195 1173"></td> </tr> <tr> <td data-bbox="748 1173 867 1226">5 (COLD)</td> <td data-bbox="867 1173 980 1226">39°F</td> <td data-bbox="980 1173 1089 1226">21°F</td> <td data-bbox="1089 1173 1195 1226"></td> </tr> </tbody> </table>	NOTCH	COMP ON	COMP OFF	SETTING	BAR DISPLAY	1 (COOL)	55°F	32°F			2	48°F	28°F		3 (NORMAL)	46°F	25°F		4	43°F	23°F		5 (COLD)	39°F	21°F	
NOTCH	COMP ON	COMP OFF	SETTING	BAR DISPLAY																									
1 (COOL)	55°F	32°F																											
2	48°F	28°F																											
3 (NORMAL)	46°F	25°F																											
4	43°F	23°F																											
5 (COLD)	39°F	21°F																											
3	DEFROST	MICOM PROGRAM																											

# 6. TROUBLE SHOOTING CHART

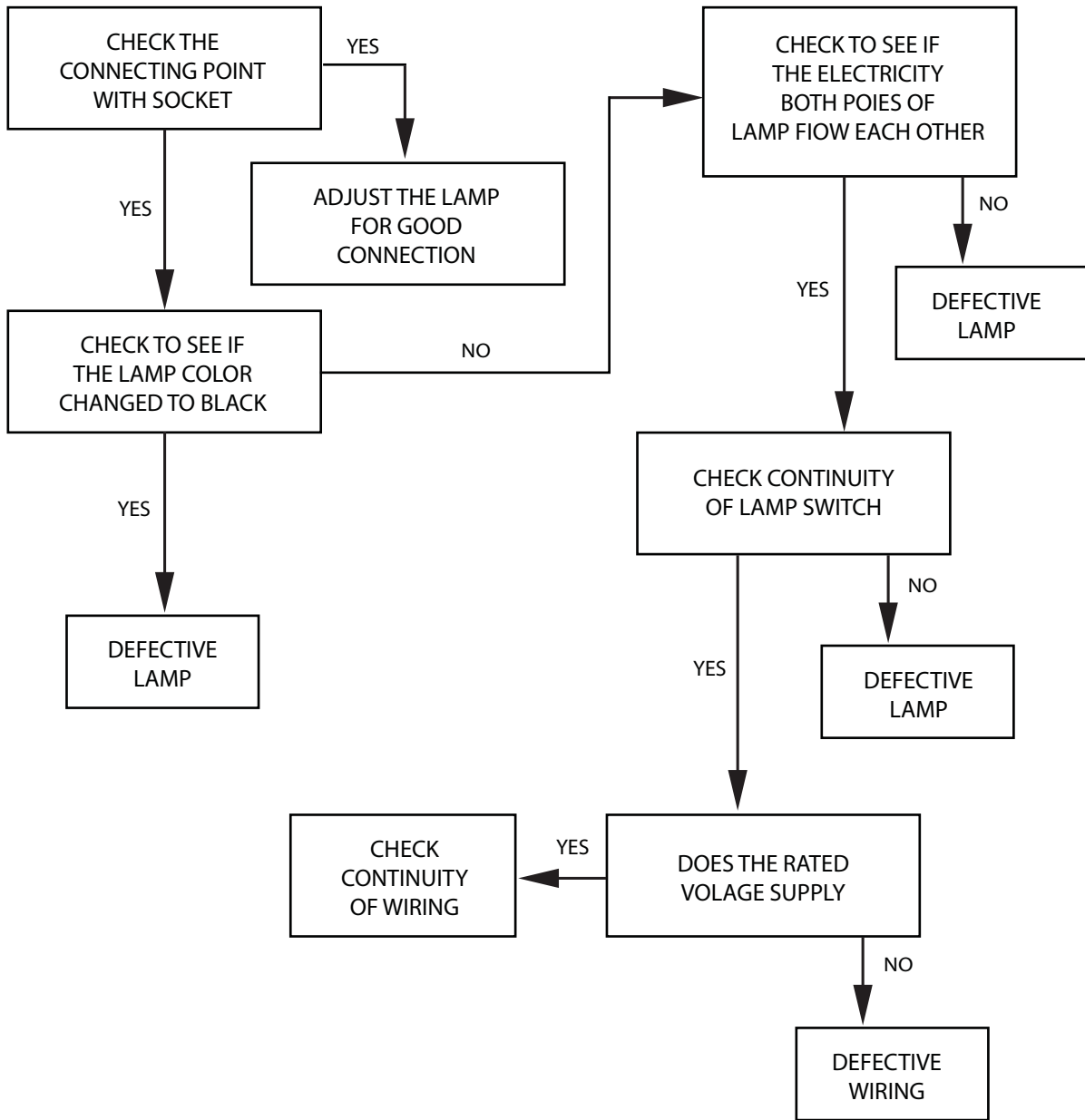
## 6-1. THE REFRIGERATOR DOES NOT COOLING



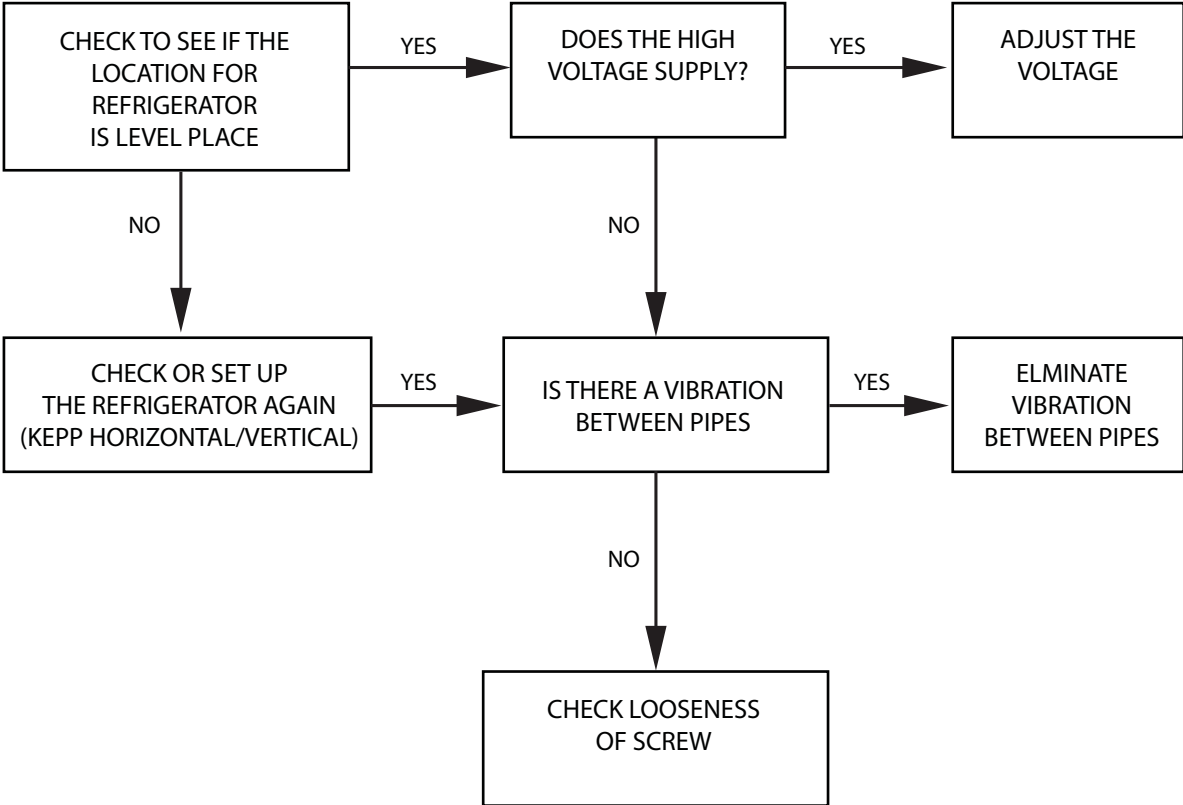
6-2. THE REFRIGERATOR DOES NOT COOLING WELL



6-3. LAMP DOES NOT LIGHT WELL



6-4. WHEN THERE IS A EXCESSIVE NOISE



# 7. REFRIGERANT CYCLE DIAGRAM

